

KERALA STATE POLLUTION CONTROL BOARD

കേരള സംസ്ഥാന മലിനീകരണ നിയന്ത്രണ ബോർഡ്

ജില്ലാ ഓഫീസ്, പാലക്കാട്

DISTRICT OFFICE, PALAKKAD

NEAR DISTRICT PANCHAYATH OFFICE, PALAKKAD - 678 001

www.kspcb.kerala.gov.in

In reply please refer to: PCB/PLKD/IC/CO-240/2008

Date : 17/05/2023

From

The Environmental Engineer

To

The Chairman,
Kerala State Pollution Control Board,
Thiruvananthapuram.

Sub:- Inspection report of the month of April.

Sir,

Inspection was conducted on 25.04.2023 at IMAGE, the CBWTF for the month of April. The inspection report is attached herewith.



Yours faithfully,

ENVIRONMENTAL ENGINEER

Encl: As above

Copy to: The Chief Environmental Engineer,
Kerala State Pollution Control Board,
Regional Office,
Kozhikode.

MONTHLY INSPECTION AT IMAGE (CBWTF),
MANTHURUTHY, PALAKKAD DISTRICT.

Date: 25-04-2023, Tuesday

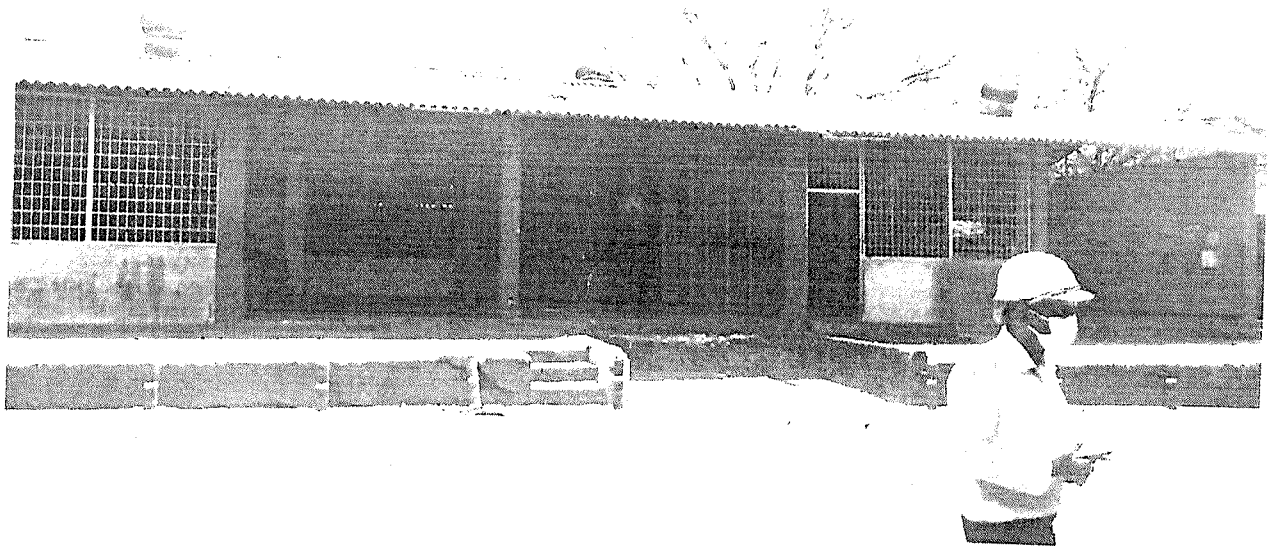
Inspected by: Sruthi Chandran AE-1 (Assistant Engineer)

Inspection Details:-

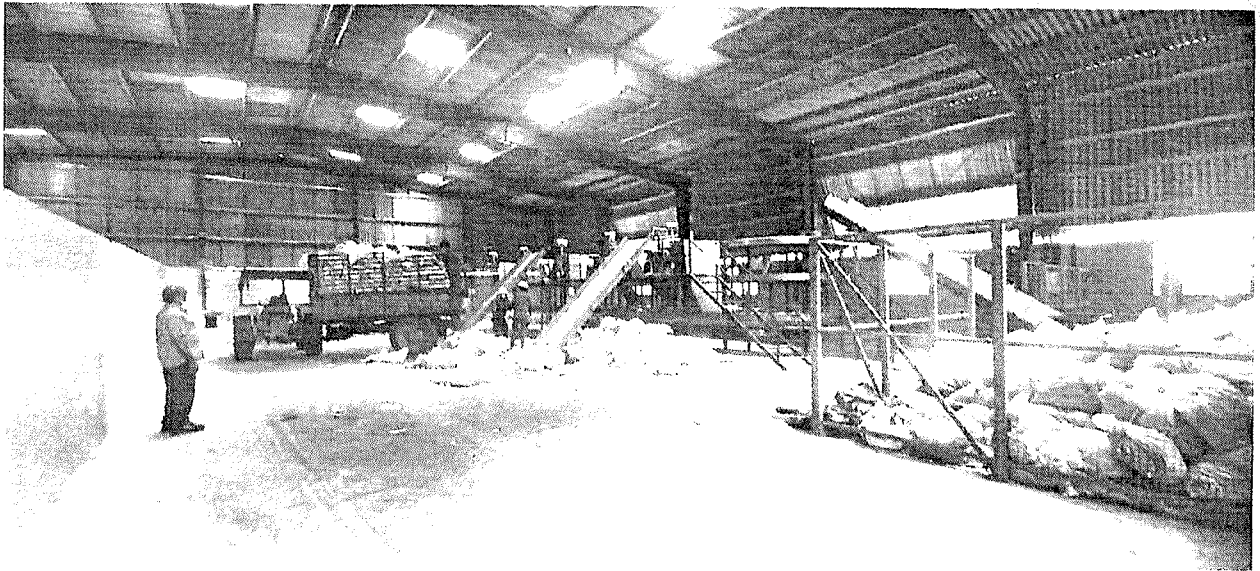
| Sl No. | DETAILS | STATUS / REMARKS |
|--------|--|--|
| 1. | BMW Collection | 50.884 MT (Average daily collection of March). |
| 2. | Total no.of Incinerators | 5 |
| 3. | Status of Incinerators | 2- Shut down for maintenance ; 1,3,4,5 –Working |
| 4. | Online Continuous Emission Monitoring System (OCEMS) Installation status | OCEMS No.1 – New Rotary (Dry Scrubber) – Plant No.1 OCEMS No.2 – Old Parishudh – Plant No.1 OCEMS No.3 – Old Rotary – Plant No.2 OCEMS No.4 – Thermax – Plant No.2 OCEMS No.5 – New Alpha – Plant No.3 |
| 5. | Barcode Scanning | Barcode scanning facility installed. There is some problem with barcode scanning facility. Site engineer informed that installed scanner doesn't work properly. |
| 6. | Unit Premises | Neat & Tidy |

| | | |
|-----|---|--|
| 7. | All Plastic Items, Synthetic Rubber Items, Metals, Glass Bottles, Other miscellaneous items | Sent to Aryaja Industries, NIDA, Kanjikode |
| 8. | ETP | ETP is under augmentation. UF not working. Pressure sand filter, Activated Carbon filter not in Operation. |
| 9. | Online Continuous Effluent Monitoring System (OCEMS) Status of working | Working; Partial connectivity shown in OCEMS as one incinerators is not uploading values (maintenance). Secondary temperature in incinerator 1,3 shows below the limit. |
| 10. | Rain Water Harvesting Pond | Three-Fourth full (no over flow seen) |
| 11. | Backlog | YES |
| 12. | Sample collected for Analysis | Collected from:- (i)Outlet of Clarifier tank |
| 13. | Sample Analysis Results | Collected on 25.04.2023 Clarifier outlet pH – 7.37 BOD – 38.8 mg/L TSS – 24 Oil & Grease –BDL |

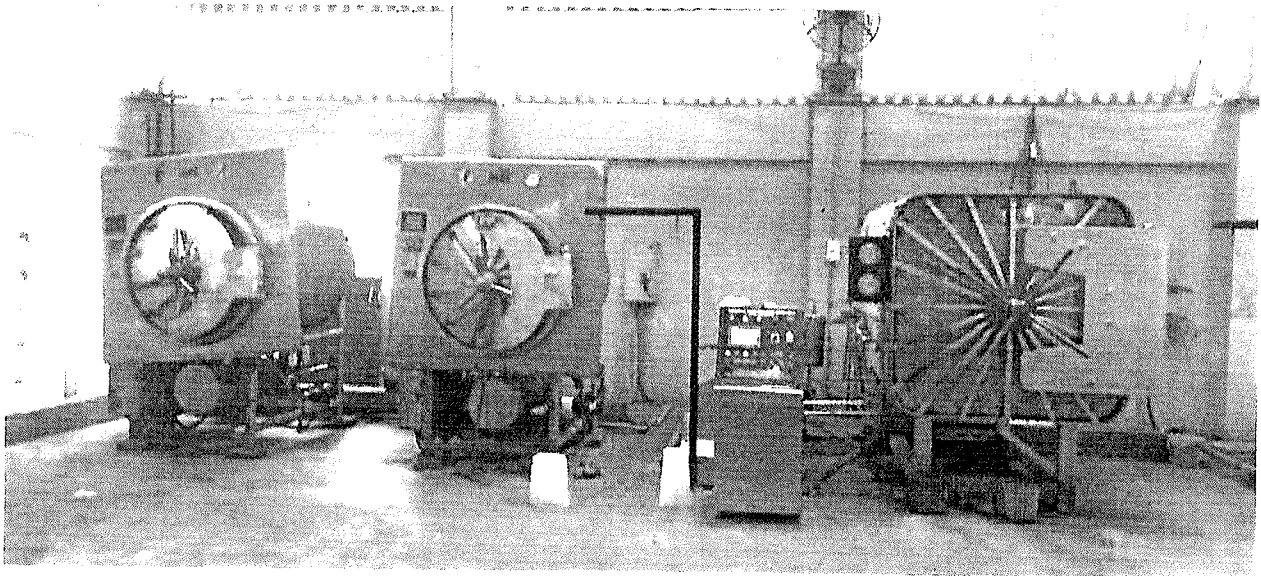
| | | |
|-----|--|---|
| | | Effluent is not conforming to limits specified. Direction issued via email to submit the explanation on the matter. |
| 14. | Hazardous Waste Incinerator Ash and ETP Sludge | Stored in Roofed Area (Collected by KEIL weekly) No spill outside |



INCOMING BMW STORAGE AREA



BARCODE SCANNING AREA- CURRENTLY NOT WORKING



AUTO CLAVE AREA